

**Description:** Lambda DNA /*Sty I* Markers (without dye) are prepared by digesting Lambda DNA with *Sty I*, followed by heat-inactivation of the enzyme. The DNA fragments are then ethanol-precipitated and resuspended in storage buffer.

**Number of fragments:** 11

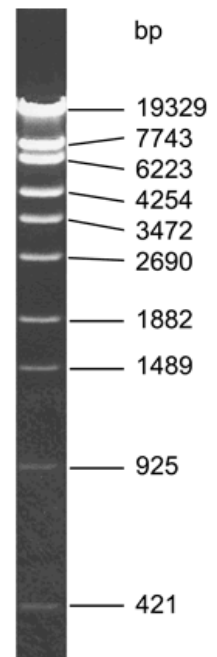
**DNA fragment length (bp):** 19329; 7743; 6223; 4254; 3472; 2690; 1882, 1489, 925, 421, 74

**Storage buffer:** 10 mM Tris-HCl (pH 7.8), 1 mM EDTA

**Concentration:** 0.5 mg/mL (see label)

**Storage:** -20 °C

**Loading:** 1 µg of the DNA Ladder /lane.



Electrophoresis conditions:  
Gel: 2% agarose  
Buffer: 0.5x TBE  
Voltage: 10 V/cm

Ref No.	S307005	307005	307025	color
Phage Lambda DNA/ <i>Sty I</i> Marker	Sample size	50 µg	250 µg	purple
Datasheet	1	1	1	--