

Description: 1 kb DNA Ladder (ready to use; with dye) is used for determining the size of double-stranded DNA from 250 to 10,000 base pairs.

Number of fragments: 13

DNA fragments length (kp):
10, 8, 6, 5, 4, 2x 3, 2.5, 2, 1.5, 2x 1, 0.75, 0.5, 0.25

Preparation of DNA ladder:

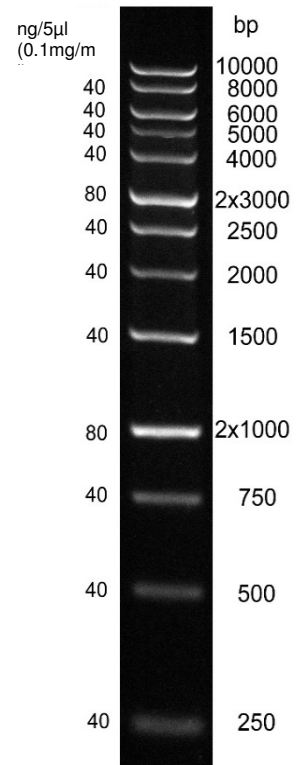
Plasmid with repetitive fragments:

- Plasmid containing fragments with size of 10, 8, 6, 5, 4, 2x 3, 2.5, 2, 1.5 kp and 2x 1 kp separated with restriction sites of EcoRV and/or RsaI were digested with EcoRV and/or RsaI enzyme.

PCR products:

- The fragments with a size of 0.75, 0.5 kp and 0.25 kp are PCR products of Pfu DNA Polymerase.

The 3.0 kb fragment and 1.0 kb fragment are present at increased intensity to allow easy identification.



Electrophoresis conditions:
Gel: 1% agarose
Buffer: 0.5x TBE
Voltage: 10 V/cm

Ref No.	S305105	305105	305125	color
1 kb plus DNA Ladder ready to use	Sample size	50 µg	5 x 50 µg	purple
Datasheet	1	1	1	--

Concentration: 0.1 mg/mL

Storage buffer: 10 mM Tris-HCl, pH 7.5, 1 mM EDTA, 10 mM NaCl
6 % glycerol, 0.05 % xylene cyanol, 0,05 % bromphenol-blue

Quality Control: Agarose gel electrophoresis

Storage: -20°C

Usage recommendation: 5 - 6 µL of the DNA Ladder /lane.