

Description: 1 kb DNA Ladder (no stain) is used for determining the size of double-stranded DNA from 250 to 10,000 base pairs.

Number of fragments: 13

DNA fragments length (kp): 10, 8, 6, 5, 4, 2x 3, 2.5, 2, 1.5, 2x 1, 0.75, 0.5, 0.25

Preparation of DNA ladder:

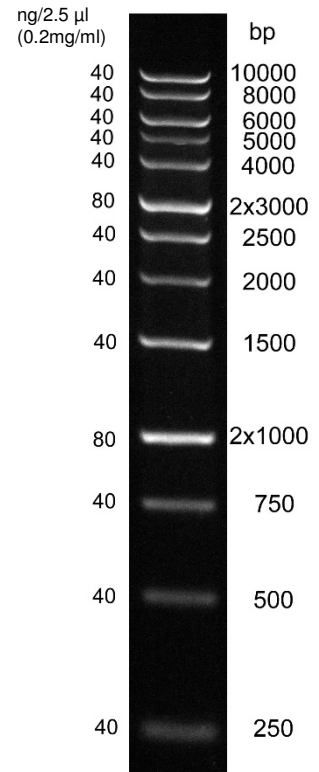
Plasmid with repetitive fragments:

- Plasmid containing fragments with size of 10, 8, 6, 5, 4, 2x 3, 2.5, 2, 1.5 kp and 2x 1 kp separated with restriction sites of EcoRV and/or RsaI were digested with EcoRV and/or RsaI enzyme.

PCR products:

- Fragments with a size of 0.75, 0.5 kp and 0.25 kp are PCR products of Pfu DNA Polymerase.

The 3.0 kb fragment and 1.0 kb fragment are present at increased intensity to allow easy identification.



Electrophoresis conditions:
 Gel: 1% agarose
 Buffer: 0.5x TBE
 Voltage: 10 V/cm

Ref No.	S305005	305005	305025	color
1 kb DNA Ladder	Sample size	50 µg	250 µg	purple
Datasheet	1	1	1	--

Concentration: 0.2 mg/mL

Storage buffer: 10 mM Tris-HCl, pH 7.5, 1 mM EDTA, 10 mM NaCl

Quality Control: Agarose gel electrophoresis

Storage: -20°C

Usage recommendation: 0.5 µg of the DNA Ladder/ lane.