

**Description:** 50 bp plus DNA Ladder (no stain) is used for determining the size of double-stranded DNA from 50 to 700 base pairs.

Number of fragments: 10

DNA fragments length (bp):

700, 500, 400, 350, 2x300, 250, 200, 150, 100, 50

### Preparation of DNA ladder:

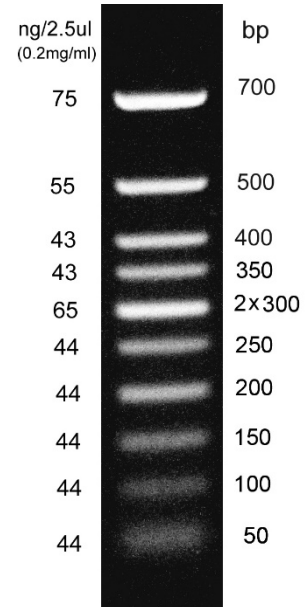
Plasmid with repetitive fragments:

- Plasmid containing fragments with size of 700, 500, 400, 2x 300 bp, and 200 bp separated with restrictions sites of RsaI were digested with RsaI enzyme.

PCR products:

- The 350, 250, 150 and 100 bp fragments are PCR products, (amplification products of Pfu DNA polymerase).

The 50 bp fragment is synthetic. The 500 bp fragment is present at increased intensity to allow easy identification.



Electrophoresis conditions:  
Gel: 1% agarose  
Buffer: 0.5x TBE  
Voltage: 10 V/cm

| Ref No.               | S304008     | 304008 | 304016 | color  |
|-----------------------|-------------|--------|--------|--------|
| 50 bp plus DNA Ladder | Sample size | 50 µg  | 250 µg | purple |
| Datasheet             | 1           | 1      | 1      | --     |

**Concentration:** 0.2 mg/mL

**Storage buffer:** 10 mM Tris-HCl, pH 7.5, 1 mM EDTA, 10 mM NaCl

**Quality Control:** Agarose gel electrophoresis

**Storage:** -20 °C

**Usage recommendation:** 0.5 µg DNA Ladder/ lane