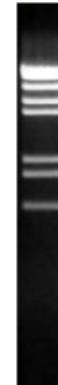


5'...A[▼]CCGGT...3'
 3'...TGGCC[▲]A...5'

Content:	Ref No.	250141S	color
Styl 10 U/μL		6000 units	blue
10x buffer H*		1x 1 mL	red
10x buffer K		1x 1 mL	yellow
Datasheet			



Lambda DNA Styl digest,
1 % agarose

Star activity: Conditions of low ionic strength, high enzyme concentration, glycerol concentration >5 %, or pH>8.0 may result in star activity

Storage: -20 °C

Concentration: 10 U/μL

Source: Styl is a restriction enzyme purified from *E.coli* WA921/pST27 hsd+

Enzyme Properties:

1x buffer H composition: 50 mM Tris-HCl (pH 7.9 at 25 °C), 100 mM NaCl, 10 mM MgCl₂, 1 mM Dithiothreitol,

General reaction mixture:

10 U Styl	1 μL
10x buffer H* or K	2 μL
DNA substrate	<1 μg
Sterile ultrapure water	Up to 20 μL

Incubate for 15 min at 37 °C

Heat inactivation: 65 °C for 20 minutes.

Methylation Sensitivity:
dam methylation: Not sensitive
dcm methylation: Not sensitive
 CpG methylation: Not sensitive

Storage buffer: 10 mM Tris-HCl (pH 7.4), 50 mM KCl, 0.1 mM EDTA, 1 mM Dithiothreitol, 200 μg/ml BSA and 50 % glycerol. Store at -20 °C.

Absence of contaminants: 50 units of Styl do not produce any unspecific cleavage products after 16 hrs incubation with 1 μg of Lambda DNA at 37 °C. After 50-fold overdigestion with Styl, greater than 98 % of the DNA fragments can be ligated and recut with this enzyme.

Unit definition: One unit is defined as the amount of enzyme required to produce a complete digest of 1 μg Lambda DNA in 60 minutes in a total reaction volume of 0.05 mL under assay conditions.

Frequency of Cutting:	λ	Ad-2	Φx174	pUC18	M13mp18	pBR322
	10	45	0	0	0	1

Percent Activity in BIORON Buffers:	L*	M*	H*	SH*	A*	K
	25-50	75-100	100	75-100	<10	50

*we recommend the addition of BSA to a final concentration of 100 μg/mL.

BIORON GmbH – In den Rauheiden 20 - 67354 Römerberg (Germany)

Phone +49 6232 298 45 0 - Fax +49 6232 298 45 29
info@bion.net www.bion.net