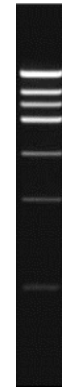


5'...T<sup>▼</sup>GATCA...3'  
 3'...ACTAG<sup>▲</sup>T...5'

Content:	Ref No.	250104S	color
BclI 10 U/μL		2500 units	blue
10x buffer M*		1x 1 mL	red
10x buffer K		1x 1 mL	yellow
Datasheet			



Lambda DNA BclI digest,  
 0.7 % agarose

We recommend the use of buffer K as universal buffer (BSA included).

**Storage:** -20 °C

**Concentration:** 10 U/μL

**Source:** BclI is a restriction enzyme purified from *Bacillus caldolyticus*.

#### Enzyme Properties:

**1x buffer M composition:** 10 mM Tris-HCl (pH 7.9 at 25 °C), 50 mM NaCl, 10 mM MgCl<sub>2</sub>, 1 mM Dithiothreitol.

**General reaction mixture:**

10 U BclI	1 μL
10x buffer M* or K	2 μL
DNA substrate	<1 μg
Sterile ultrapure water	Up to 20 μL

**Incubate for 15 min at 50 °C**

**Heat inactivation:** No.

**Methylation Sensitivity:**  
*dam* methylation: Blocked  
*dcm* methylation: Not sensitive  
 CpG methylation: Not sensitive

**Storage buffer:** 10 mM Tris-HCl (pH 7.4 at 25 °C), 50 mM KCl, 0.1 mM EDTA, 1 mM Dithiothreitol, 200 μg/ml BSA, and 50 % glycerol. Store at -20 °C

**Absence of contaminants:** 100 units of BclI do not produce any unspecific cleavage products after 16 hrs incubation with 1 μg of Lambda DNA (*dam*<sup>-</sup>) at 50 °C. After 50-fold overdigestion with BclI, greater than 95 % of the DNA fragments can be ligated and recut with this enzyme.

**Unit definition:** One unit is defined as the amount of enzyme required to produce a complete digest of 1 μg Lambda DNA (*dam*<sup>-</sup>) in 60 minutes in a total reaction volume of 0.05 mL under assay conditions.

Frequency of Cutting:	λ	Ad-2	Φx174	pUC18	M13mp18	pBR322
	8	5	0	0	0	0

Percent Activity in BIORON Buffers:	L*	M*	H*	SH*	A*	K
	10-25	100	75	50-75	10-25	100

\*we recommend the addition of BSA to a final concentration of 100 μg/mL.

**BIORON GmbH – In den Rauheiden 20 - 67354 Römerberg (Germany)**

Phone +49 6232 298 45 0 - Fax +49 6232 298 45 29  
[info@bioron.net](mailto:info@bioron.net) [www.bioron.net](http://www.bioron.net)