

**Just fine Molecular Biology**

**Phage Lambda DNA/Bme18 I (iso-Avall) Markers**

**Description** Lambda DNA (cl857 *Sam 7*)/*Bme18 I* Markers are prepared by digesting Lambda DNA with *Bme18 I (iso-Ava II)*, followed by heat-inactivation of the enzyme. The DNA fragments are then ethanol-precipitated and resuspended in storage buffer.

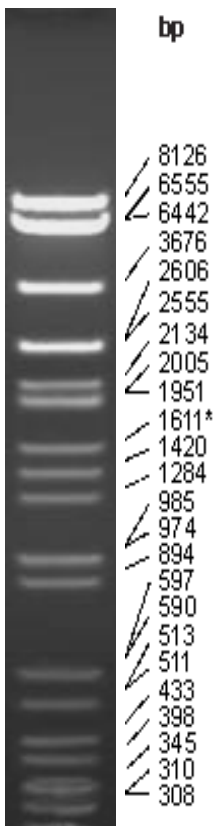
**Fragments (Base Pairs)** 8126, 6555, 6442, 3676, 2606, 2555, 2134, 2005, 1951, 1611\*, 1420, 1284, 985, 974, 894, 597, 590, 513, 511, 433, 398, 345, 310, 308, 272, 242, 215, 151, 88, 73, 67, 45, 42, 32, 29\*, 23

**Storage Buffer** 10mM Tris-HCl (pH 8.0), 1mM EDTA.

**Concentration** 0.2-0.5µg/µl.

**Storage** Store at -20°C.

<u>Cat#</u>	<u>Pack size</u>	<u>Price, Euro</u>
305105	50 µg	
305125	250µg	



**Bioron GmbH**

Contact: Phone: +49-(0)-621- 5720 915 Fax:+49-(0)-621-5720 916  
 E-Mail: [info@bioron.net](mailto:info@bioron.net) [www.bioron.net](http://www.bioron.net)