

Phage Lambda DNA/*Sty* I Marker

Description Lambda DNA (cl857 *Sam* 7)/*Hind* III Markers are prepared by digesting Lambda DNA with *Sty* I, followed by inactivation of the enzyme. The DNA fragments are then ethanol-precipitated and resuspended in the storage buffer.

Fragments (Base Pairs) 19,329; 7,743; 6,223; 4,254; 3,472; 2,690; 1,882, 1,489; 925; 421; 74

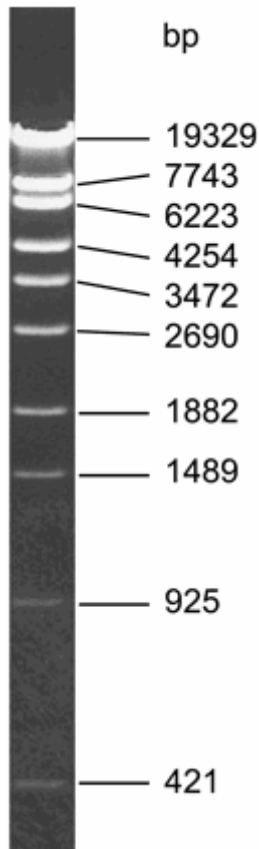
Loading The recommended amount of size marker to load on an agarose gel is 1µg/lane

Storage Buffer 10mM Tris-HCl (pH 8.0), 1mM EDTA.

Concentration: 0.2-0.5µg/µl.

Number of Bands: 11.

Storage -20°C.



Attention! The cohesive ends of fragments 1 and 4 may cause formation of extra band 23583 bp. The fragments may be separated by heating to 65°C for 3 minutes before loading the sample on the gel.

<u>Cat#</u>	<u>Pack size</u>	<u>Price, Euro</u>
307005	0,05mg	
307025	0,25mg	

Version 1.1 .06.03