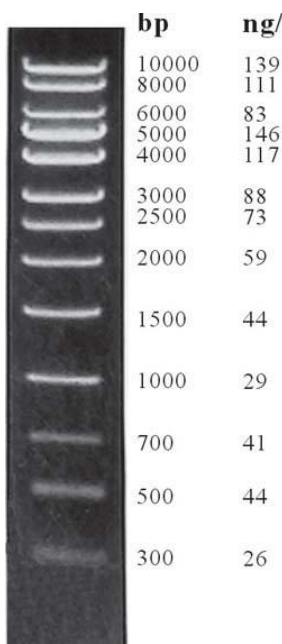


1 kb BLue DNA LADDER ready-to-use

Description the 1 kb Blue DNA LADDER Marker contains thirteen discrete fragments ranging from 300bp to 10000bp. The marker is ideal for size determination of digested DNA.



The marker is supplied in a ready-to-use mix at a concentration of 0,1 µg/µl. For the best result load 5-10µl of marker per well.

Fragments sizes and approx. Quantity {ng/10µl} 300 , 500, 700, 1000, 1500, 2000, 2500, 3000, 4000, 5000, 6000, 8000, 10000 bp)
{26ng, 44ng, 41ng, 29ng, 44ng, 59ng, 73ng, 88ng, 117ng, 146ng, 83ng, 111ng, 139ng}

Storage Buffer 10mM EDTA, 10% glycerol, 0,015% bromphenol blue and 0,17 % SDS

Storage The marker is stable at room temperature. For long term storage we recommend the storage at **-20°C**.

Catalog #	Pack size
305105	50 µg
305125	250 µg