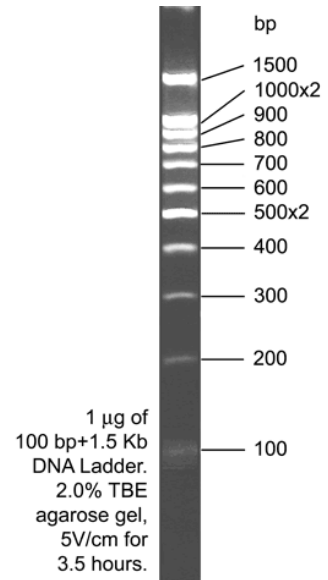


100 bp BLUE eXtended DNA Ladder

Description: 100 bp BLUE eXtended DNA Ladder is a pre-mixed, ready-to-load molecular weight marker containing a dye which serves as visual aids to monitor the progress of migration during agarose gel electrophoresis. The DNA Ladder consists of proprietary plasmids which are digested to completion with appropriate restriction enzymes to yield 11 bands suitable for use as molecular weight standards for agarose gel electrophoresis. The digested DNA includes fragments ranging from 100 - 1500 base pairs. The 500 bp fragment and the 1000 bp fragment are present at increased intensity to allow easy identification. All fragments are blunt-ended.

DNA fragments length (bp) and DNA mass:
 100x2 (20 ng); 200 (20 ng); 300 (30 ng); 400 (50 ng); 500x2 (150 ng); 600 (80 ng); 700 (70 ng); 800 (110 ng); 900 (120 ng); 1000x2 (200 ng); 1500 (150 ng).



- Concentration:** 0.1 µg/µl
- Storage buffer:** 10 mM Tris-HCl (pH 8.0); 5 mM NaCl, 10 mM EDTA; 10% glycerol; 0.02% bromphenol blue
Store at -20 °C.
- Storage:** The Marker is stable at **room-temperature**. We recommend to store at **-20 °C** for longer term storage.
- Usage recommendation:** The 100 bp BLUE eXtended DNA Ladder was not designed for precise quantification of DNA mass, but can be used for approximating the mass of DNA in comparably intense samples of similar size.
We recommend loading 0,25 – max. 1,0 µg of the DNA Ladder per line.

Catalog #	Pack size
304105	0,05 mg
304125	0,25 mg

V: 18.6.2008 AS